
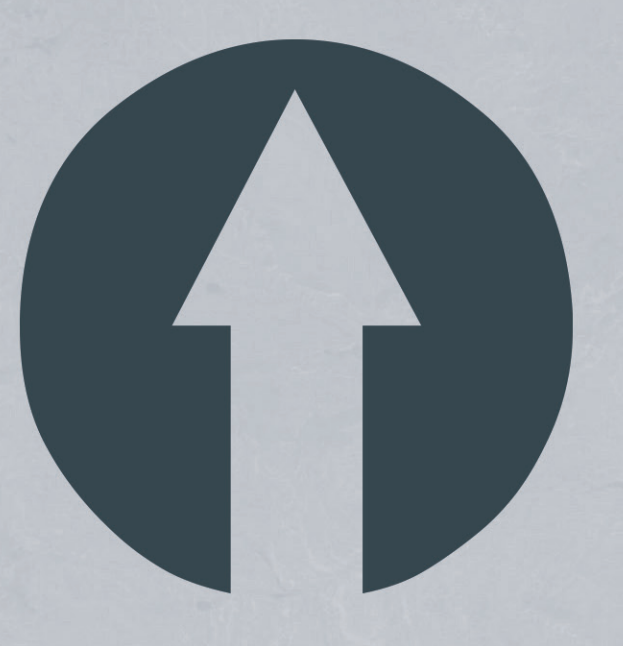
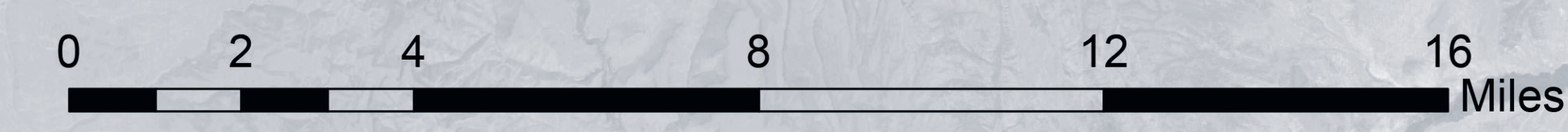
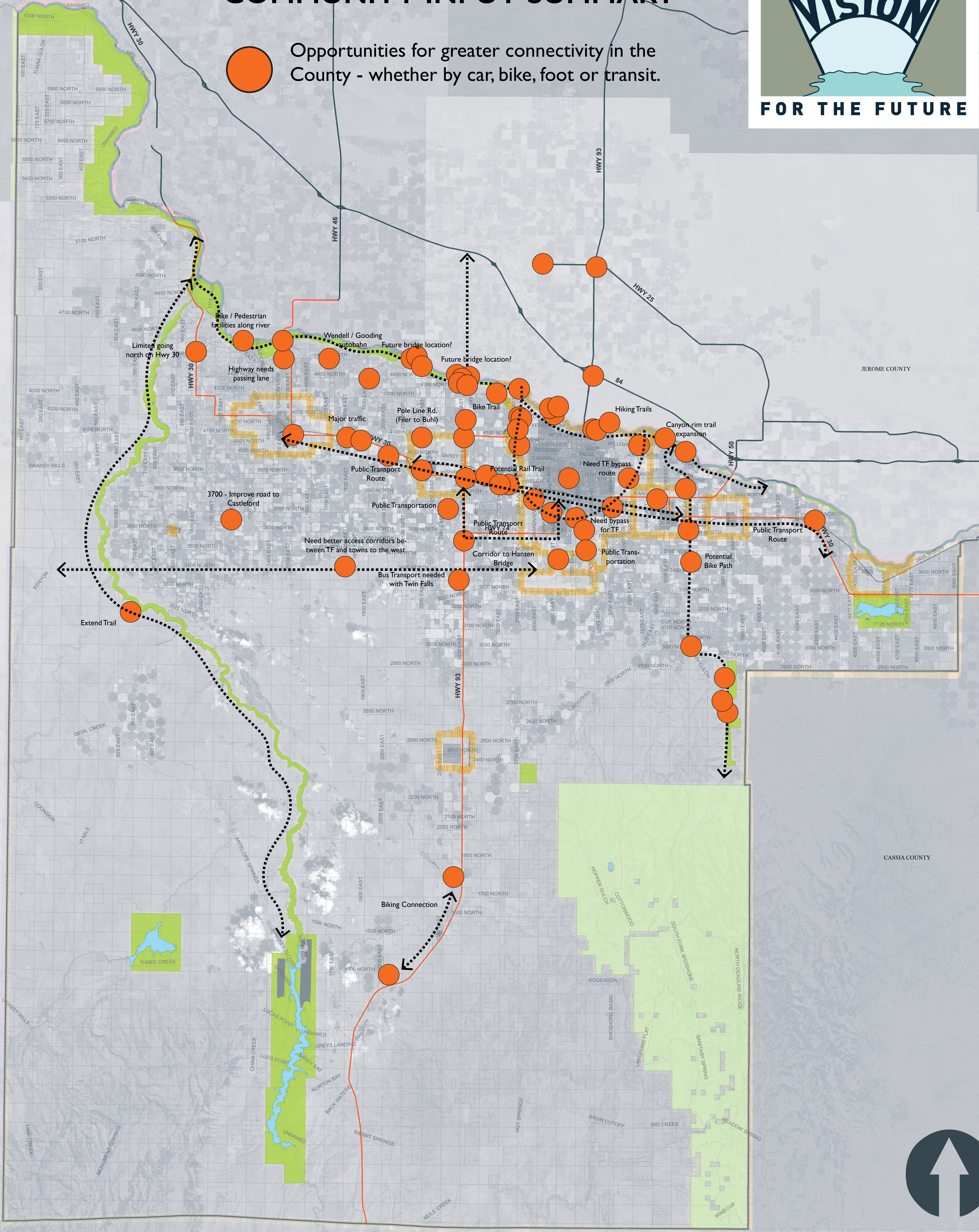


PLANNING WEEK - COMMUNITY INPUT SUMMARY



 Opportunities for greater connectivity in the County - whether by car, bike, foot or transit.

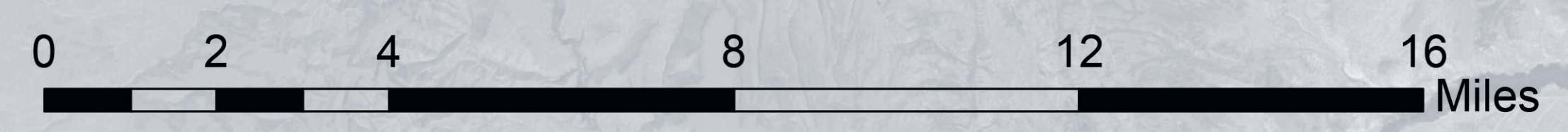
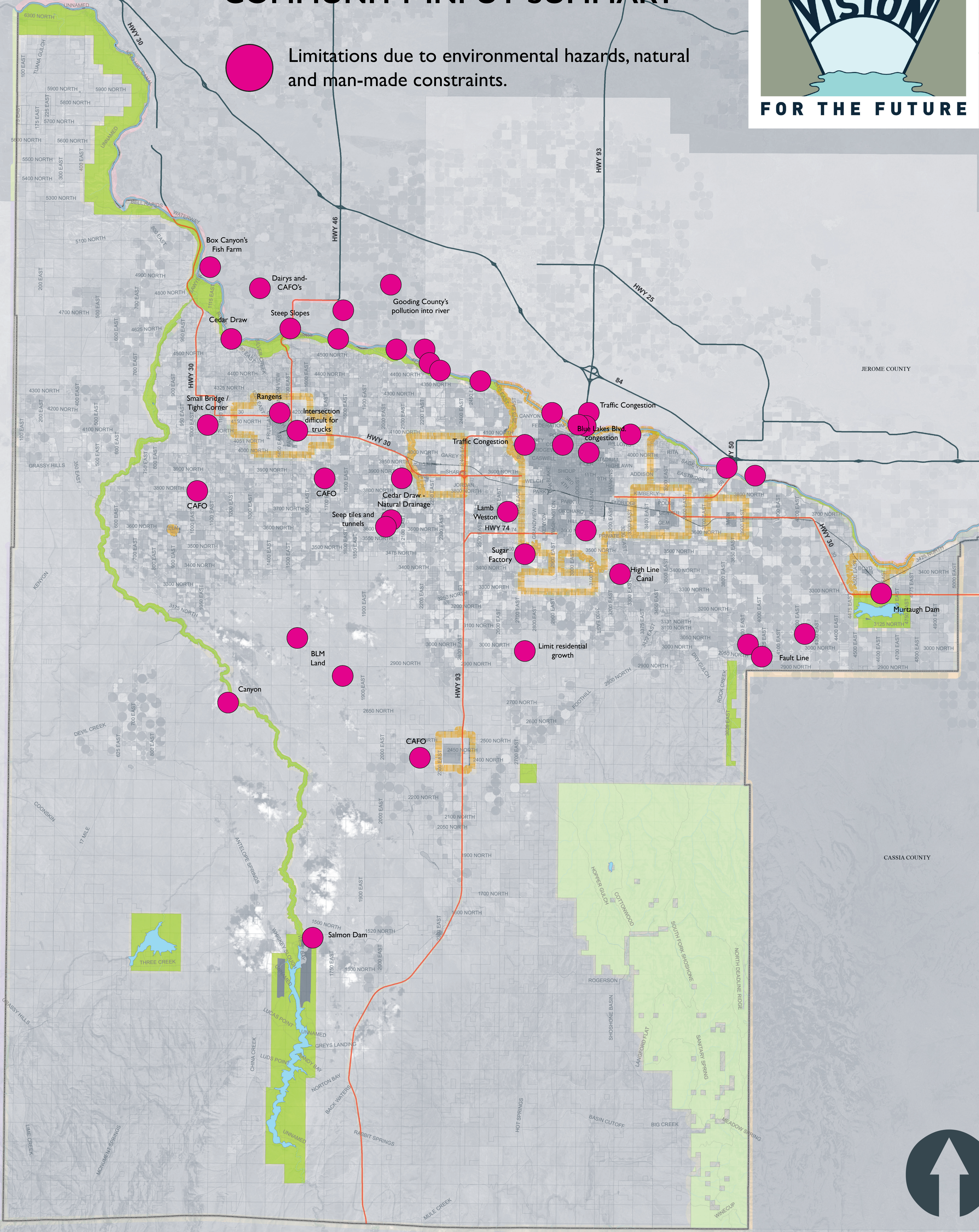


Source: Esri, DigitalGlobe, GeoEye, Earthstar Geographics, CNES/Airbus DS, USDA, USGS, AeroGRID, IGN, and the GIS User Community

PLANNING WEEK - COMMUNITY INPUT SUMMARY



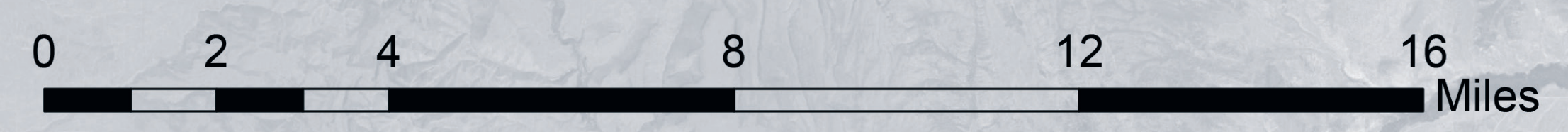
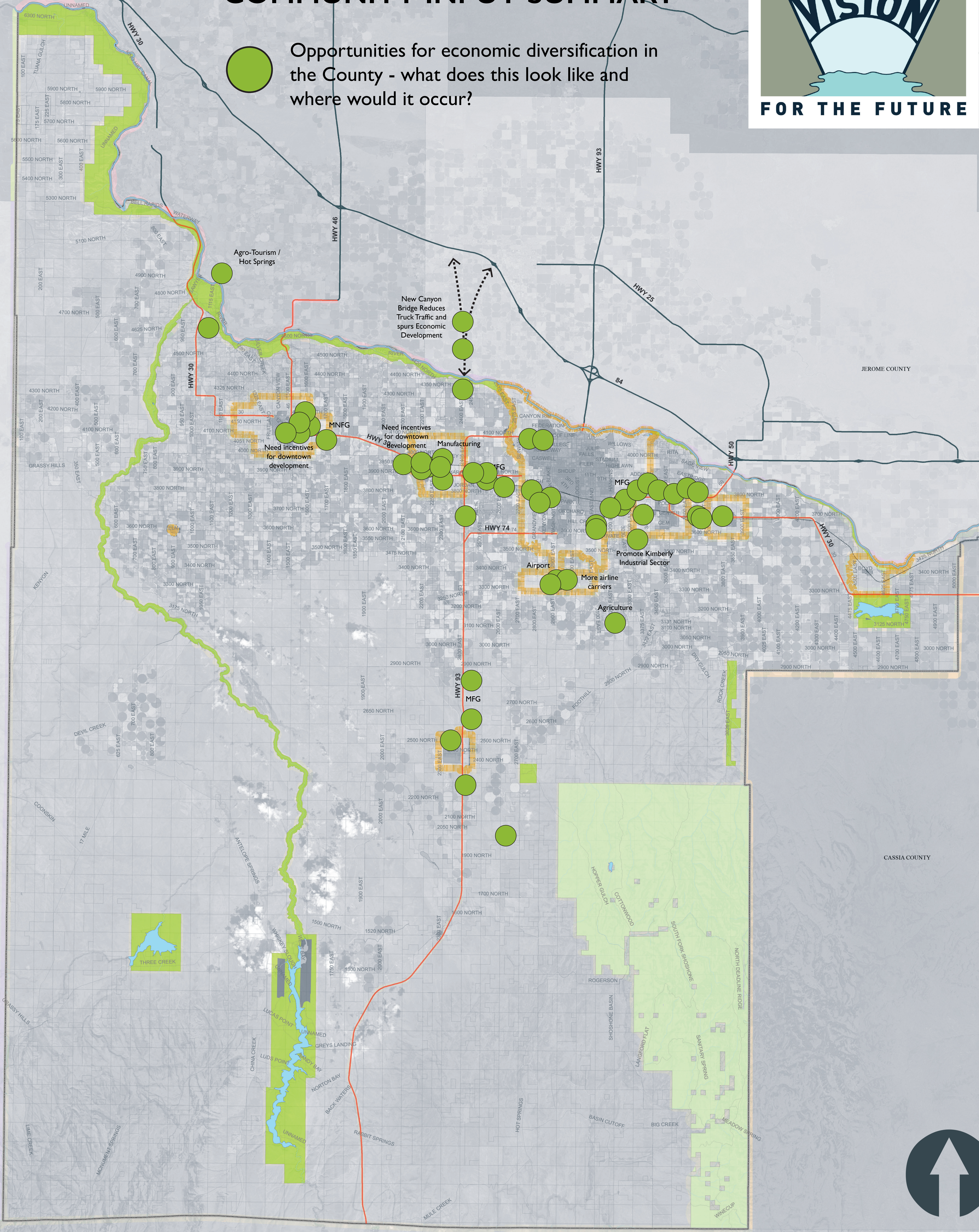
 Limitations due to environmental hazards, natural and man-made constraints.



PLANNING WEEK - COMMUNITY INPUT SUMMARY

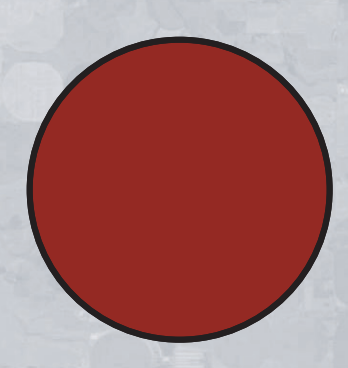


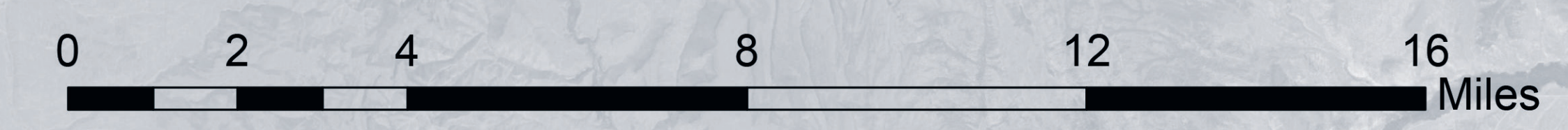
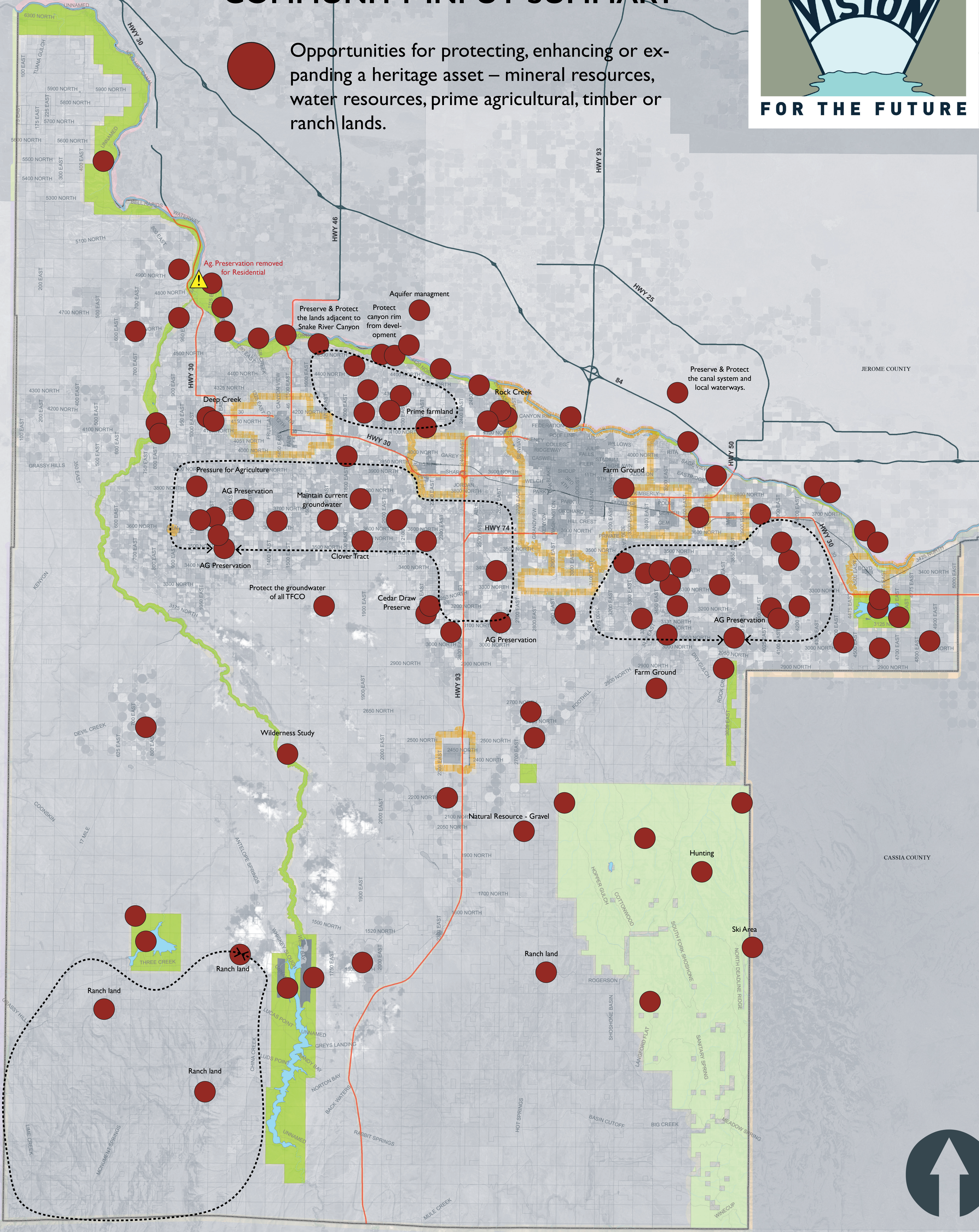
Opportunities for economic diversification in the County - what does this look like and where would it occur?



PLANNING WEEK - COMMUNITY INPUT SUMMARY

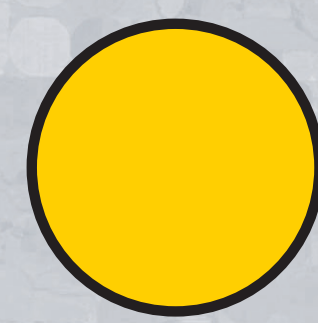


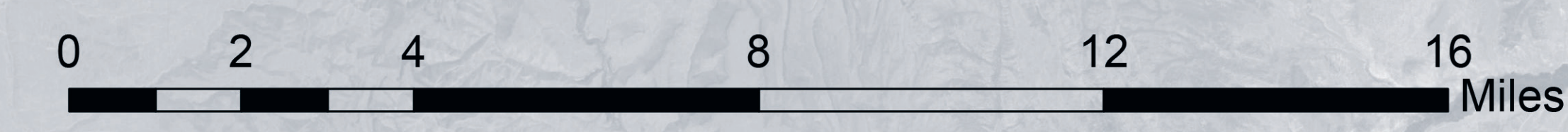
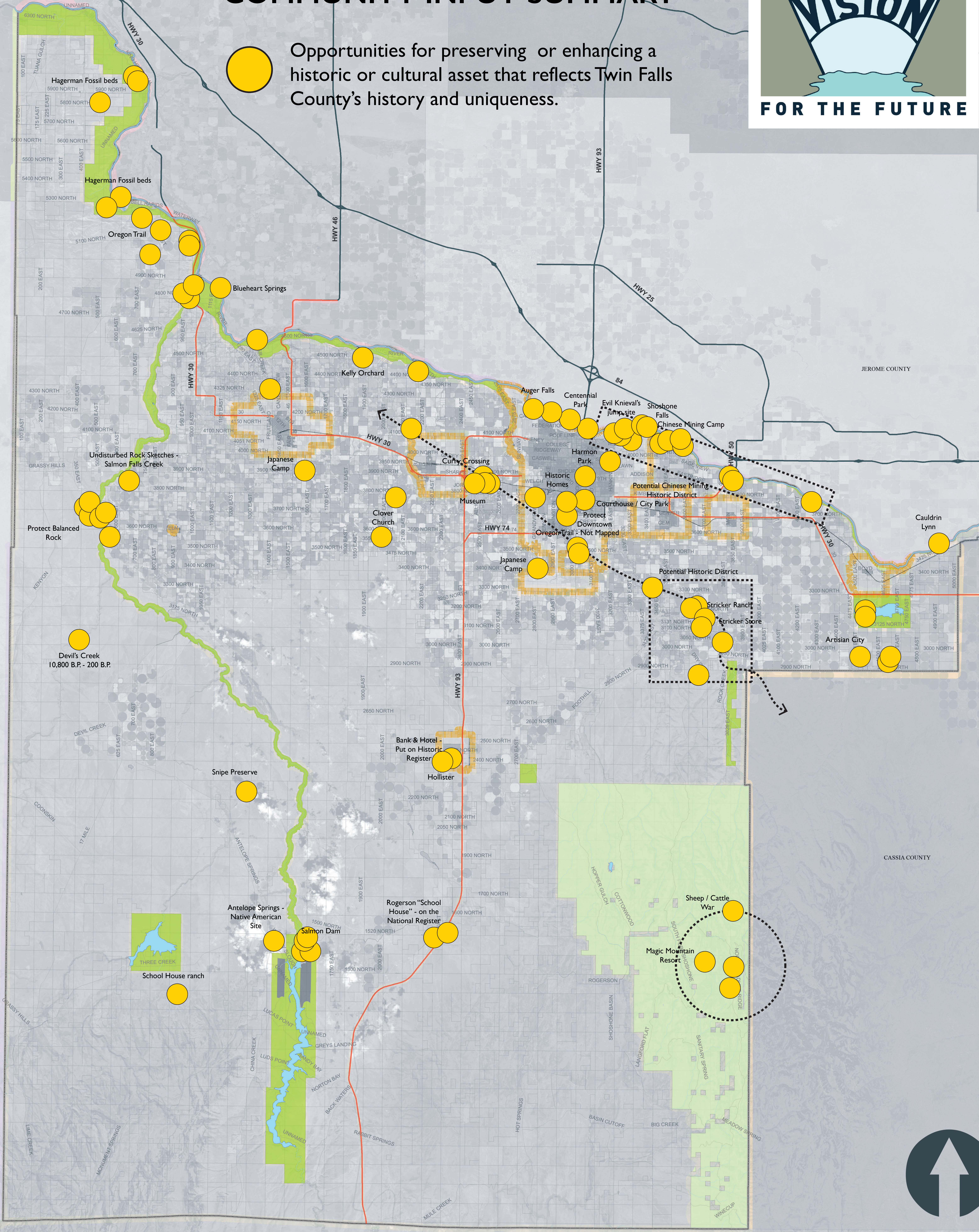
 Opportunities for protecting, enhancing or expanding a heritage asset – mineral resources, water resources, prime agricultural, timber or ranch lands.



PLANNING WEEK - COMMUNITY INPUT SUMMARY



 Opportunities for preserving or enhancing a historic or cultural asset that reflects Twin Falls County's history and uniqueness.

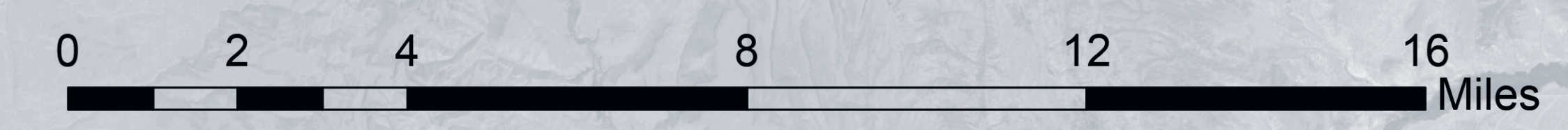
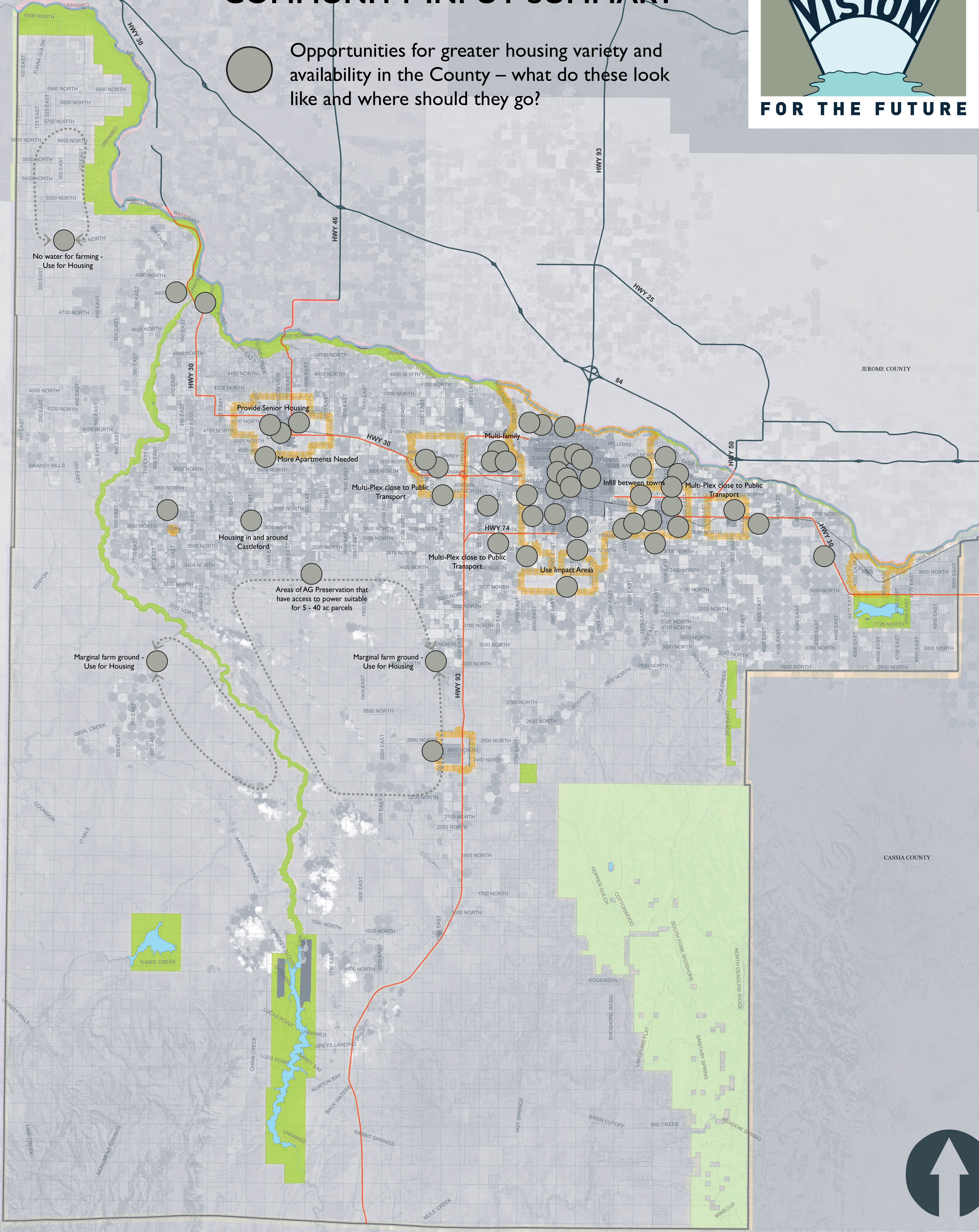


Source: Esri, DigitalGlobe, GeoEye, Earthstar Geographics, CNES/Airbus DS, USDA, USGS, AeroGRID, IGN, and the GIS User Community

PLANNING WEEK - COMMUNITY INPUT SUMMARY



Opportunities for greater housing variety and availability in the County – what do these look like and where should they go?

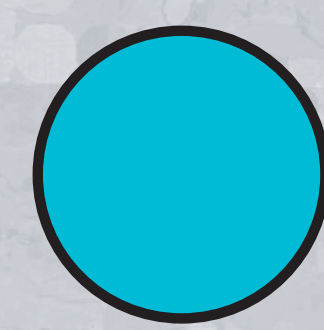


PLANNING WEEK - COMMUNITY INPUT SUMMARY

TWIN FALLS COUNTY

20|20



 Opportunities for protecting, enhancing or expanding access to public recreation and open space.

